



FLORAL EXPOSITIONS



PROFESSIONAL FLORAL DESIGNS A-Z: ORDER ON PAGE 6



A1
4" round
\$45.00 each



A2
4" square
\$45.00 each



A3
4" square
\$45.00 each



B
4" square
\$50.00 each



C
6" tall x 5" wide
\$75.00 each



D
6" tall x 5" wide
\$75.00 each



E1
6" tall x 5" wide
\$75.00 each



G3
6" tall x 5" wide
\$75.00 each



F1
6" tall x 4" wide
\$60.00 each



F2
6" tall x 4" wide
\$60.00 each



G1
6" tall x 5" wide
\$60.00 each



G2
6" tall x 5" wide
\$60.00 each



H
10-14" tall x 11 x 5-6" wide
\$75.00 each



I
16" tall x 10" wide
\$95.00 each



J1
7" tall x 6" wide
\$95.00 each



J2
7" tall x 8" wide
\$100.00 each

Custom Floral Arrangements are also available, please reach out to our design team for a quote!

Floral Arrangements are displayed at the discounted pricing rate. A 20% increase will apply if not placed by deadline.

Discounted pricing only applies to orders received and paid in full thirty days prior to Exhibitor Move In



FLORAL EXPOSITIONS

PROFESSIONAL FLORAL DESIGNS A-Z: ORDER ON PAGE 6



K
8" tall x 8" wide
\$95.00 each



L
10" tall x 10" wide
\$95.00 each



M
10" tall x 10" wide
\$95.00 each



N
12" tall x 12" wide
\$125.00 each



O
12" tall x 12-14" wide
\$135.00 each



P
12" tall x 12-14" wide
\$135.00 each



Q
12" tall x 12-14" wide
\$135.00 each



R
12" tall x 12-14" wide
\$135.00 each



S
6-18" tall x 6" wide
\$135.00 each



T
16-18" tall by 10-12" wide
\$150.00 each



U
16-18" tall x 10" wide
\$150.00 each



V
16-18" tall x 10" wide
\$150.00 each



W
14" tall x 6" wide
\$120.00 each



X
10" tall by 18-20" wide
\$150.00 each



Y
18" tall x 14" wide
\$175.00 each



Z
20-24" tall x 16-18" wide
\$275.00 each

Custom Floral Arrangements are also available, please reach out to our design team for a quote!

Floral Arrangements are displayed at the discounted pricing rate. A 20% increase will apply if not placed by deadline.

Discounted pricing only applies to orders received and paid in full thirty days prior to Exhibitor Move In



FLORAL EXPOSITIONS

GREEN PLANTS 2-10' : ORDER ON PAGE 6



Arb
2-3'



Spath
2-3'



Palm
2-3'



Snake Plant
2-3'



Croton
2-3'



Palm
4-6'



Bamboo Palm
4 - 6'



Bird of Paradise
4 - 6'



Fiddle Fig Tree
4 - 6'



Adonidia Palm
10 - 16'

Discount pricing only applies to orders received and paid in full thirty days prior to Exhibitor Move In



FLORAL EXPOSITIONS

BLOOMING, FERNS, IVY & POTHOS: ORDER ON PAGE 6



Fern



Ivy



Pothos



Kalanchoe



Bromeliad

SPECIALTY DESIGNS : ORDER ON PAGE 7



Option 1: Capri Planter
36" Long x 10" Tall x 8" Wide
Colorful blooming potted in
black or white planter



Option 2: Pavilion Planter
38" Long x 16" Tall x 14" Wide
Filled with 2-3' Green plants
top-dressed with trailing green
plant in black or white planter



Option 3: Pavilion Planter
38" Long x 16" Tall x 14" Wide
Filled with three 5-6' palms
top-dressed with moss in black
or white planter



Option 4: Regal Urn
15" Square x 30" Tall
2-3' full green plant potted
in black or white urn



Option 5: Soho Planter
36" Long x 24" Tall x 10" Wide
Filled with 2-3' Green plants top-dressed
with moss in a black or white planter



Option 6: Cedar Planter
56" Long x 32" Tall x 16" Wide
Filled with 2-3' Green plants top-
dressed with moss



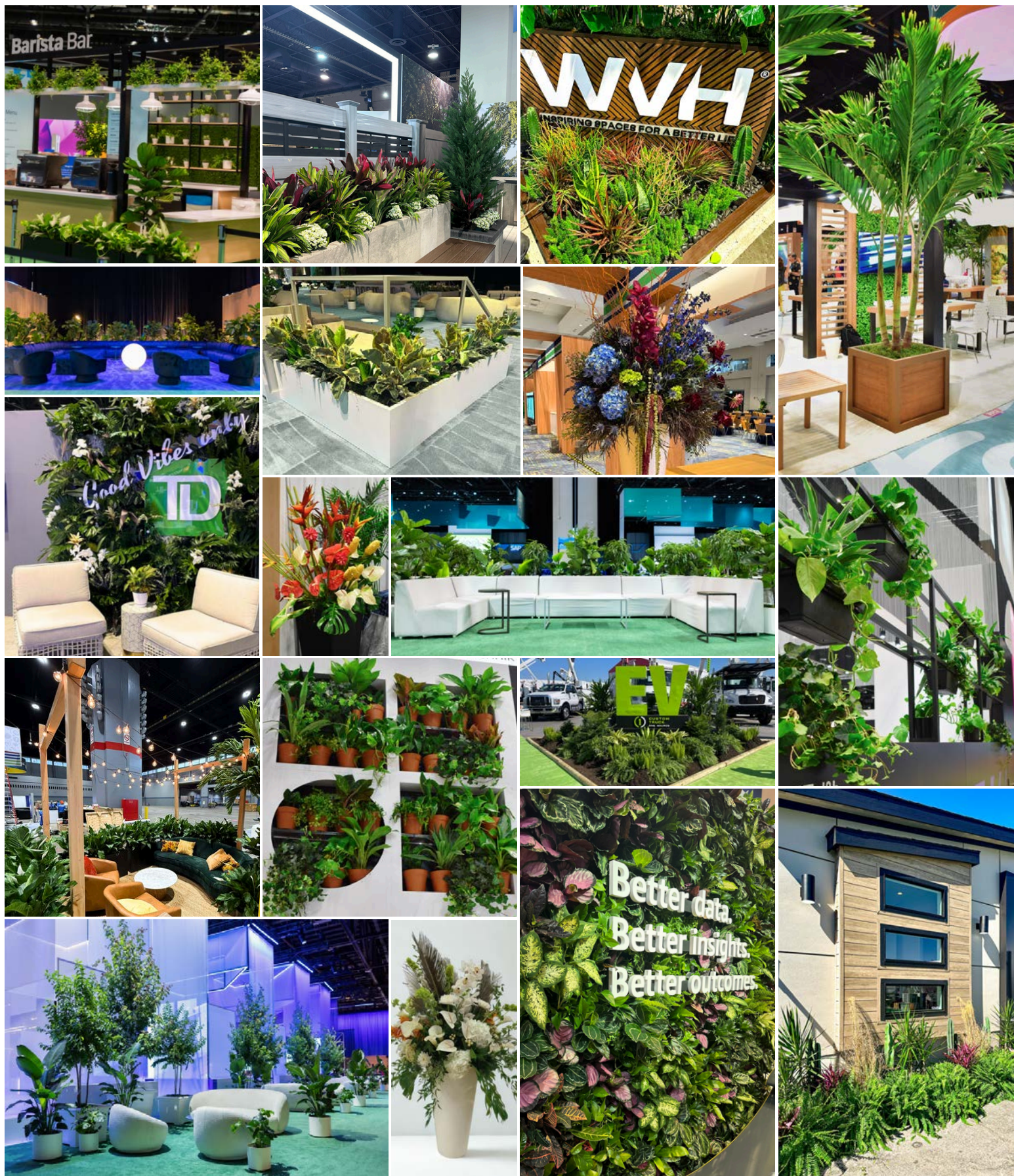
Option 7
4' tall x 4' wide Faux
Boxwood Hedge



Option 8
7' tall x 4' wide Faux
Boxwood Hedge

Discount pricing only applies to orders received and paid in full thirty days prior to Exhibitor Move In

Interested in custom planted gardens, living walls, or large trees? Reach out to our sales team today!
orders@floralexpo.net



Discount pricing only applies to orders received and paid in full thirty days prior to Exhibitor Move In

PROFESSIONAL FRESH FLORAL

Please note all floral pricing increases 20% after the discount pricing deadline

| | Option A-Z | Price | Quantity | Total |
|-----------------------------------|--|-------|----------|-------|
| Fresh Floral Option A-Z | | | | |
| Fresh Floral Option A-Z | | | | |
| Fresh Floral Option A-Z | | | | |
| Custom Fresh Floral Design | <i>Contact our Sales Team with your desired arrangement size and color scheme!</i> | | | |

GREEN PLANTS

| Height | Plant Type | Discount Price | Standard Price | Quantity | Total |
|-----------------------|------------|----------------|----------------|----------|-------|
| 2-3' | | \$50.00 | \$60.00 | | |
| 4' | | \$60.00 | \$75.00 | | |
| 5' | | \$80.00 | \$95.00 | | |
| 6' | | \$95.00 | \$125.00 | | |
| 4-6' Bird of Paradise | | \$20.00/ft | \$30.00/ft | | |
| 4-6' Fiddle Fig Tree | | \$20.00/ft | \$30.00/ft | | |
| 8' Palm Green Plant | | \$200.00 | \$320.00 | | |
| 10-16' Adonidia Palm | | \$40.00/ft | \$50.00/ft | | |

LOW PLANTS

| | Preferred Color | Discount Price | Standard Price | Quantity | Total |
|------------|-----------------|----------------|----------------|----------|-------|
| Ferns | | \$40.00 | \$45.00 | | |
| Ivy | | \$40.00 | \$45.00 | | |
| Pothos | | \$40.00 | \$45.00 | | |
| Kalanchoes | | \$35.00 | \$45.00 | | |
| Bromeliads | | \$35.00 | \$45.00 | | |

Seasonal Blooming Available Upon Request

| | |
|--|-----------------------------|
| <p>All plant orders come with a complimentary black or white container. Please note your preference here:</p> | <p>BLACK WHITE</p> |
|--|-----------------------------|

UPGRADED PLANTER OPTIONS

| *Pricing does not include plants* | Planter Color | Discount Price | Standard Price | Quantity | Total |
|---|---------------|----------------|----------------|----------|-------|
| Capri Planter: 36" Long x 10" Tall x 8" Wide | Black / White | \$100.00 | \$150.00 | | |
| Pavilion Planter: 38" Long x 16" Tall x 14" Wide | Black / White | \$200.00 | \$300.00 | | |
| Regal Urn: 15" Square x 30" Tall | Black / White | \$125.00 | \$200.00 | | |
| Soho Planter: 36" Long x 24" Tall x 10" Wide | Black / White | \$200.00 | \$300.00 | | |
| Cedar Planter: 56" Long x 32" Tall x 16" Wide | Woodgrain | \$200.00 | \$300.00 | | |

SPECIALTY PLANTER DESIGNS

| | Planter Color | Discount Price | Standard Price | Quantity | Total |
|-----------------------------------|---------------|----------------|----------------|----------|-------|
| Option 1: Capri Planter | Black / White | \$325.00 | \$400.00 | | |
| Option 2: Pavilion Planter | Black / White | \$450.00 | \$550.00 | | |
| Option 3: Pavilion Planter | Black / White | \$500.00 | \$600.00 | | |
| Option 4: Regal Urn | Black / White | \$175.00 | \$225.00 | | |
| Option 5: Soho Planter | Black / White | \$400.00 | \$500.00 | | |
| Option 6: Cedar Planter | | \$575.00 | \$675.00 | | |
| Option 7: 4x4 Hedge Wall | | \$450.00 | \$575.00 | | |
| Option 8: 4x7 Hedge Wall | | \$650.00 | \$775.00 | | |

Please note that all of our plants and materials are rental items only, and we kindly ask that everything remains in your exhibit space to avoid replacement charges.

Plant availability may vary slightly with season and location. All orders must be paid in full prior to the move in.

We greatly appreciate your business and look forward to working with you soon!

-The Floral Expositions Team

Please fill out the information below and return the completed form to Floral Expositions via email | orders@floralexpo.net

SHOW NAME: _____

LOCATION: _____

SHOW DATES: _____

COMPANY: _____

BOOTH REPRESENTATIVE: _____

ONSITE PHONE # : (_____) _____ - _____ **BOOTH #:** _____

EMAIL ADDRESS: _____

PAYMENT METHOD: Check _____ ACH/Wire _____ CC _____ ***Payment link will be sent***

BILLING ADDRESS: _____

CITY: _____ **STATE:** _____ **ZIP CODE:** _____

Floral Expositions uses a secure payment portal to process all credit card payments. Once we receive your order, our team will send an invoice, as well as a payment link. When payment is finalized, a paid invoice will be emailed for your show file.

If your order is tax exempt, please include your tax-exempt form for the state in which the show is being held.

CALL US: (407) 961-6531 | EMAIL US: orders@floralexpo.net

| | |
|---------------------------------------|----------------|
| Delivery & Maintenance Fee | \$30.00 |
| Subtotal | |
| Sales Tax 6.5% | |
| Total | |

Authorized Signature: _____

Thank You!