

EVENT: **The Global Produce & Floral Show**

EXHIBITING COMPANY: \_\_\_\_\_

NAME OF EAC / DESIGN FIRM: \_\_\_\_\_

CONTACT NAME: \_\_\_\_\_

PHONE: \_\_\_\_\_ FAX: \_\_\_\_\_

CONTACT EMAIL: \_\_\_\_\_

SQUARE FOOTAGE OF BOOTH/EXHIBIT: \_\_\_\_\_

SQUARE FOOTAGE OF COVER: \_\_\_\_\_

STAIR RISE & TREAD: \_\_\_\_\_ GUARD RAIL MEASUREMENTS: \_\_\_\_\_

COMMENTS: \_\_\_\_\_

BOOTH #: \_\_\_\_\_

BOOTH SIZE: \_\_\_\_\_ X \_\_\_\_\_

BOOTH TYPE:

MULTI-LEVEL     COVERED

I AM:

THE EXHIBITOR

AN EAC/I&D: \_\_\_\_\_

OTHER: \_\_\_\_\_

*Please consult the OCCC Multi-Level & Covered Booth Guidelines in your exhibitor kit for complete information regarding multi-level and covered booths. All booths must be constructed as required by all applicable codes and standards.*

Orange County Fire Rescue Department requires firewatch personnel for:

- All multi-level booths and exhibits regardless of square footage, unless a sprinkler system is installed
- All other covered booths and exhibits exceeding three hundred (300) square feet.

**COVERED BOOTH, EXHIBITS, TENT & THEATRE DEFINED:** To place something over or upon an exhibit or portion of an exhibit (e.g., roof, ceiling, tenting, lattice, fabric, plastic) to cover the ground level and/or support decorative structures. The upper portion of a "covered" exhibit is not occupiable.

- Covered Booth/Exhibits 299 square feet or less: Firewatch not required
- Covered Booth/Exhibits 300 - 1000 square feet (maximum): Firewatch REQUIRED

**MULTI-LEVEL BOOTH DEFINED:** To construct a level or tier atop an exhibit or portion of an exhibit, to be occupied by one (1) or more persons.

- Multi-Level Booth/Exhibits 299 square feet or less: Firewatch and one (1) stair REQUIRED
- Multi-Level Booth/Exhibits 300 - 900 square feet (maximum): Firewatch and two (2) stairs REQUIRED

Please send the completed form back to:

Orange County Convention Center Attn: Event Management  
Regular Mail: PO Box 691509, Orlando, FL 32869  
Overnight: 9860 Universal Boulevard, Orlando, FL 32819

**TO BE COMPLETED BY OCC AND ORANGE COUNTY FIRE MARSHALL**

EVENT MANAGER: \_\_\_\_\_ APPROVED: \_\_\_\_\_

OCCC RECEIVED: \_\_\_\_\_ NUMBER OF COPIES: \_\_\_\_\_  YES     NO

DATE TO FIRE MARSHALL: \_\_\_\_\_ DATE RETURNED: \_\_\_\_\_ FIREWATCH REQUIRED: \_\_\_\_\_

PLANS REVIEWER: \_\_\_\_\_  YES     NO

COMMENTS: \_\_\_\_\_

**Covered Booth Definition** – To place something over or upon an exhibit or portion of an exhibit (e.g., roof, ceiling, tenting, lattice, fabric, plastic) to cover the ground level and/or support decorative structures. The upper portion of a “covered” exhibit is not occupiable.

**Multi-Level Booth Definition** – To construct a level or tier atop an exhibitor or portion of an exhibit, to be occupied by one (1) or more persons.

## A. Guidelines for Covered Exhibits With Less Than Three Hundred (300) Covered Square Feet

- 1) All materials used in the construction of covered exhibits and all decorative materials within the exhibit must be non-combustible or limited combustible (flame-retardant) materials. Certification of flame retardant treatment, along with samples of said materials, must be submitted, if requested by Orange County Fire Rescue Services Department. It is recommended certifications of flame retardant treatments be available at show site. Exhibitor must install a single station and battery operated smoke detector on the interior of each covered exhibit or structure regardless the square footage. The detector must sound an audible alarm and be installed per the manufacturer’s instructions.
- 2) Exhibitor must provide at least one (1) 2-A, 10-BC portable, dry chemical fire extinguisher. Fire extinguisher(s) must be mounted in a visible location and be accessible at all times.

## B. Guidelines for Multi-level Exhibits (regardless the size) and Covered Exhibits With Larger Than Three Hundred (300) Covered Square Feet

Requests for construction of multi-level (regardless the size) or covered exhibits (larger than 300 square feet) must be reviewed by the OCCC Event Management department and Orange County Fire Rescue Services Department. To ensure success of your exhibit, please read and comply with the following guidelines:

- 1) Plans should be submitted before exhibit construction begins and must adhere to the following:
  - a. They must be scaled, signed and dated by a registered architect or engineer.
  - b. They must include the show name and dates.
  - c. They must include exhibitor’s name and assigned booth number.
  - d. They must include directional information (i.e. indicate neighboring aisles and/or booth numbers).
  - e. They must indicate maximum exhibit height, within the booth. Height guidelines are established, per event, by show management. Refer to the Exhibitor’s Manual for applicable guidelines.
  - f. They must include the rise and tread of the stairs.
  - g. They must include the guard rail measurements.
- 2) Send two (2) copies of scaled, signed and dated blue prints (with front and side elevations), by a registered architect or engineer, to:

Orange County Convention Center  
Attn: Event Management  
**Regular Mail:** PO Box 691509, Orlando, FL 32869  
**Overnight:** 9860 Universal Boulevard, Orlando, FL 32819

- 3) All materials used in the construction of multi-level and/or covered exhibits and all decorative materials within the exhibit must be non-combustible or limited combustible (flame-retardant) materials. If requested, certification of flame-retardant treatment, along with samples of said materials, must be submitted to Orange County Fire Rescue Services Department. It is recommended certifications of flame retardant treatments be available at show site.
- 4) The upper deck of multi-level exhibits, if larger than three hundred (300) square feet, shall meet the following requirements:
  - a. Upper level may not have a “cover” of any kind (e.g., roof, ceiling, tenting, lattice, fabric and plastic).
  - b. Exhibits with an enclosed room or occupied second story must post notice at the bottom of the stairway, indicating maximum permitted occupancy (or total permitted weight load of the second level).

- c. If second level is to be occupied and greater than three hundred (300) square feet, two (2) stairways are required, remote from each other. If second level is to be occupied and less than three hundred (300) square feet, one (1) set of stairs is permitted. All stairs must be a minimum of three feet (3') in width, equipped with a handrail on at least one (1) side and constitute a "straight run" or be "squared off." Spiral stairs or winders are not permitted.
- d. Individual areas of upper decks or covered areas must be limited to dimensions that do not exceed one thousand (1,000) square feet.
- e. If the upper deck, or covered area, is greater than one thousand (1,000) square feet, a clear fire break (unobstructed aisle), of not less than ten feet (10') must be provided on all four (4) sides of each one thousand (1,000) foot area. To avoid transfer of fire to another area, the firebreak (unobstructed aisle) shall not contain displays, furniture, or other materials.
- f. The ten foot (10') clear space may be spanned by an overhead bridge or canopy which must not exceed four feet (4') in width. The bridge or canopy must be constructed of non-combustible materials.
- g. Exhibitor must install a single station and battery operated smoke detector on the interior of each covered exhibit or structure regardless the square footage. The detector must sound an audible alarm and be installed per manufacturer's instructions
- h. Exhibitor must provide a portable, dry chemical fire extinguisher for each level or each covered exhibit or structure. At least one (1) 2-A, 10-BC portable type fire extinguisher must be provided for each three hundred (300) square feet. Fire extinguishers must be mounted in a visible location, near exit doors, and be accessible at all times.

### C. Required Fire Watch Personnel

Orange County Fire Rescue Services Department requires firewatch personnel for:

- ALL multi-level exhibits (regardless of the square footage) and
- All other covered exhibits exceeding three hundred (300) square feet.

The exhibitor is required to order firewatch personnel through the OCCC Event Management department no less than two (2) weeks before the show moves in. Firewatch is required:

- a. For ALL multi-level exhibits (regardless of the square footage) and all other covered exhibits exceeding three hundred (300) square feet.
- b. On all show days
- c. Beginning one half (1/2) hour prior to show opening and ending one half (1/2) hour following show closing. Fire watch personnel are charged at the prevailing rate.
- d. To place order, contact: the OCCC Event Management department. Phone: (407) 685-9882 Fax: (407) 685-9866

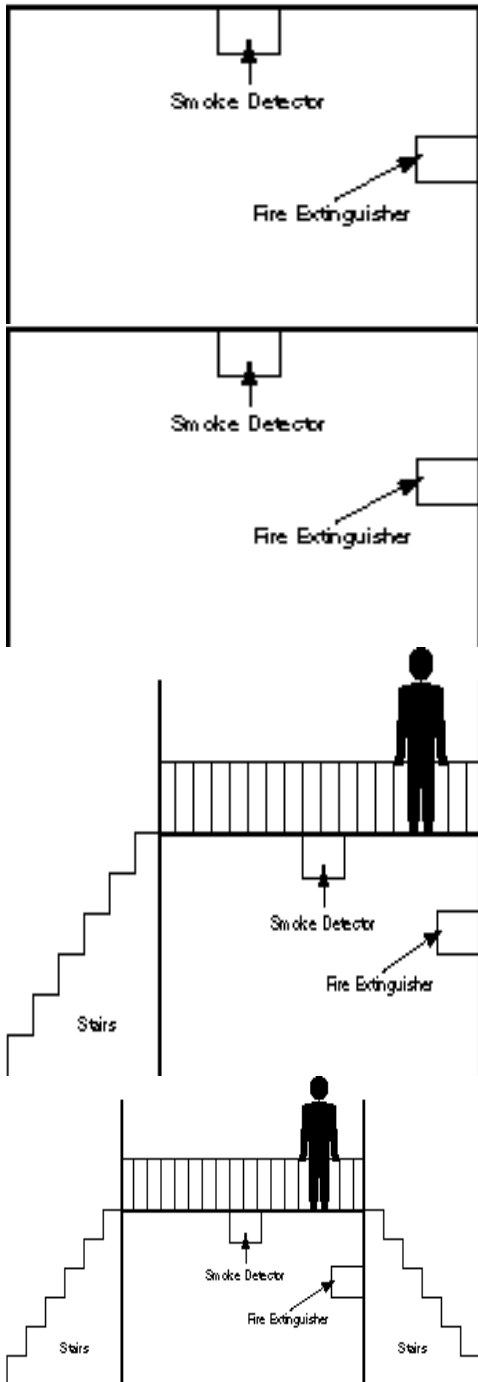
### D. Alternative to Fire Watch Personnel (Automatic Extinguishing System)

This alternative to fire watch personnel applies to the first level of exhibits with an occupiable second level, regardless the size and/or single-story covered exhibits where the covered area exceeds three hundred (300) square feet.

- 1) Automatic sprinkler systems must be designed in accordance with N.F.P.A. 13 1991 Edition.
- 2) These systems may be connected to the Convention Center's existing standpipe system and in some cases, the domestic water supply. Connections to water systems must be made by the Orange County Convention Center.
- 3) Extinguishing system designs must be part of the original plan submissions. Orange County Fire Rescue Services Department requires permitting and testing.
- 4) Exhibits or structures protected by an automatic extinguishing system must have flow alarm, audible and visual, within that area. This alarm is to be a local type, sounding in the vicinity of the exhibit or structure.
- 5) Exhibitor must install at least one (1) single station, battery operated smoke detector on the interior of each covered exhibit or structure regardless the square footage. The detector must have an audible alarm and be installed per the manufacturer's instructions.
- 6) Exhibitor must provide a portable, dry chemical fire extinguisher for each level or each covered exhibit/structure. At least one (1) 2-A, 10-BC portable type fire extinguisher must be provided for each three hundred (300) square feet. Fire extinguishers must be mounted in a visible location, near exit doors, and be accessible at all times.

If you have questions regarding these [guidelines](#), contact:  
Event Management  
Orange County Convention Center  
Phone: (407) 685-9882  
Fax: (407) 685-9866

If you have questions regarding [Fire Code](#), contact:  
Orange County Fire Rescue Services Department  
Phone: (407) 685-9811  
Fax : (407) 685-9866



### Covered Exhibits

299 sq. ft. or less

- Firewatch or Extinguishing System Not Required
- **All Booths to be Constructed as Required by Applicable Codes and Standards**

### Covered Booth, Tent and Theatre

300 sq. ft. to 1,000 sq. ft. - maximum allowed

- Firewatch or Extinguishing System Required
- All Booths to be Constructed as Required by Applicable Codes and Standards

### Multi-Level Exhibits

299 sq. ft. or less

- Firewatch or Extinguishing System Required
- Minimum 1 Stair Required
- All Booths to be Constructed as Required by Applicable Codes and Standards

### Multi-Level Exhibits

300 sq. ft. to 900 sq. ft. - maximum allowed

- Firewatch or Extinguishing System Required
- Minimum 2 Stairs Required
- All Booths to be Constructed as Required by Applicable Codes and Standards

## Electrical Conditions

1. All equipment regardless of source of power must comply with the National Electrical Code, and all Federal, State, and Local Safety Codes.
2. Use of open clip sockets, latex or lamp cord wire, unapproved duplex or triplex attachment plugs in exhibits is prohibited.
3. Permanent building electrical outlets are not a part of booth space and are not to be used by exhibitors.
4. Under NO circumstances shall anyone other than an OCCC electrician make electrical connections to house equipment.
5. Special equipment requiring company engineers or technicians for assembly, servicing, preparatory work, and operation may be executed without a house electrician; however, all service connections and overload protection to such equipment must be made by a house electrician only.
6. All equipment must be properly tagged or marked with complete information as to the type and/or amount of current, voltage, phase, frequency, horsepower, etc. required.
7. All material and equipment furnished by the OCCC shall remain the property of the OCCC and shall be removed ONLY by the OCCC at the close of the show.
8. Unless otherwise directed, OCCC electricians are authorized to cut floor coverings to permit installation of service.
9. All 120V cords must be of the 3 wire, grounded type. All exposed non-current carrying metal parts of fixed equipment, which are liable to be energized, shall be grounded.
10. The OCCC reserves the right to refuse connection to any exhibitor whose equipment is deemed unsafe by the OCCC.
11. Orders received during the incentive period will receive priority over base or on-site orders.
12. The exhibitor releases, waives and holds harmless the OCCC, its officers, employees and agents for any liability, claims, and damages arising out of any of the services or equipment provided herein. The exhibitor shall indemnify the OCCC for any bodily injury or property damage resulting from any negligent act or omission of the exhibitor, its officer, employees or agents.
13. Obstructions blocking utility floor boxes are subject to relocation as necessary.
14. The OCCC will charge time and materials for exhibitor or appointed contractor installed cords, which require troubleshooting and/or redistribution.
15. All electrical services are to be billed to the next greatest wattage or amperage (i.e. 15amp 208v single phase = 20amp 208v single phase).
16. The OCCC does not provide distribution panels. If an exhibitor orders "bulk power", the OCCC will not provide distribution panels to the exhibitor; they must provide their own.

## Plumbing & Gases Conditions

1. Plumbing services are only available from the floor.
2. Compressed air pressure may vary. No guarantee can be made of minimum and maximum pressure. If pressure is critical, please contact Exhibitor Services at (407) 685-9824.
3. The OCCC will not branch/split gas from one location to another to achieve multiple locations. The OCCC is not responsible for gas distribution installed by others.
4. All gas will be removed or shut off one hour after the close of each day. LP gas prices include hook-up and dismantle of tank each day.
5. Labor charges will apply for service calls.
6. All equipment must comply with the Southern Building Code, all Federal, State, and local safety codes.
7. All material and equipment furnished by the OCCC shall remain the property of the OCCC and shall be removed ONLY by the OCCC at the close of show.
8. Unless otherwise directed, OCCC personnel are authorized to cut floor coverings to permit installation of service.

## Additional Exhibitor Conditions

1. Claims will not be considered unless filed by the exhibitor at the OCCC Service Desk prior to the close of the show.
2. Freight deliveries, including, but not limited to: UPS, FedEx, RPS, GPS, etc. will not be accepted by the OCCC. Most carriers will not deliver to individual booths. Refer to your exhibitor manual or ask your show management for proper drayage instructions.
3. Adhesive-backed decals (stick-on) or similar items (except nametags) may not be distributed or used in the OCCC.
4. Decorations, signs, banners, etc., may not be taped, nailed, tacked, stapled or otherwise fastened to ceilings, walls, doors, windows, painted surfaces, or columns by exhibitors or their designee.
5. Cooking permits must be obtained from your exhibitor manual or show management, completed and accepted by the OCCC prior to any cooking activity. A 2A40 B.C. fire extinguisher must be in the booth, no more than thirty (30) feet from each cooking device. Exhibitor shall comply with all Orange County Health Department rules and regulations. Exhibits involving cooking or food preparation must provide a clean-up area or use those provided by show management. Disposal of cooking residue into the OCCC's drainage system is prohibited. Holding tanks for disposal of cooking residue (oil, grease, etc.) are required.
6. "Day tanks" of bottled gas may be used, during show hours, for cooking or demonstration purposes. Tanks must have a release valve and be removed from the OCCC, daily, at the close of event. At no time can tanks be stored in the OCCC. A 2A40 B.C. fire extinguisher must be in the booth, no more than thirty (30) feet from each cooking device.
7. Exhibits or displays, equipment, stock or supplies will not be allowed to enter or leave by way of the front entrances of the OCCC.
8. Fog, smoke and special effect equipment is restricted to water based chemicals. Approval must be obtained from show management and the Orange County Fire Rescue Services Department through OCCC Event Coordination. Fog, smoke and special effect equipment must not be operated in areas where the effect could enter adjacent spaces, e.g., exhibition hall entrances, concourses, etc.
9. Food and beverages are not permitted on premises unless purchased through the OCCC's Food Service Partners or as an approved exhibit by the legal manufacturer and/or distributor. Food or beverages may not be brought in or delivered to the OCCC for personal consumption. Exhibitors planning to distribute food and beverages, whether manufacturer or distributor, must make advance arrangements with the OCCC's Food Service Partners.
10. Hazardous Work Areas - During move-in and move-out, exhibition halls, loading docks, truck staging areas and service corridors are considered hazardous work areas. Alcoholic beverages, possession or use of controlled substances of any kind, horseplay, practical jokes, etc. are prohibited. Speeding or reckless use of vehicles or equipment is prohibited. Music or noise that may limit the audibility of back-up signals, fire alarms or emergency messages is prohibited. Children under 16 years of age are prohibited.
11. Holes may not be drilled, cored, or punched into any surfaces of the OCCC.
12. Multi-level and/or Covered Exhibits require firewatch personnel or an automatic extinguishing system and submittal of scaled, stamped plans. Guidelines are available through your exhibitor manual, show management or OCCC Event Management. Exhibitor will be charged for firewatch personnel per Orange County's fee schedules.
13. Painting signs, exhibits or other objects is not permitted in the OCCC.
14. Permits are required for booths and/or exhibitor activity that includes cooking, pyrotechnic, tent, welding or cutting and multi-level or covered booths or other potentially dangerous hazards. Each situation must be individually approved. Permit information may be obtained from your exhibitor manual, show management, or OCCC Event Coordination.
15. In compliance with the Florida Clean Air Act, Florida Statutes Sections 386.205 and 386.206, smoking is not permitted on any parts of the OCCC campus.
16. Static helium balloon displays are permitted after filing a Balloons Agreement with OCCC Exhibitor Services department. Helium balloons may not be used as giveaways. Helium tank storage inside the OCCC is prohibited.
17. Tape used on exhibition hall floors must be low residue resistant carpet tape (Polyken 105C or Renfrew #147) and low residue safety tape (Asiachem SST-736 or approved equivalent). All tape must be removed from the floor and disposed of immediately after the event.
18. Vehicles that remain in the exhibition hall as part of a display must have the battery cables disconnected. The gas tank must either be taped shut or have a lockable gas cap and may contain no more than one-fourth (1/4) tank or 10 (ten) gallons of fuel, whichever is less.